



## 2/265 Cavendish Road Coorparoo QLD

3 2 2

Positioned in a tightly held boutique complex, 2/265 Cavendish Road, Coorparoo presents a rare opportunity to secure spacious, low-maintenance living in one of Brisbane's most strategically located inner-ring suburbs.

Located approximately 4km from the Brisbane CBD, this property offers exceptional connectivity for professionals, with direct access to major arterial roads, public transport, hospitals, and leading educational institutions. Whether commuting or enjoying the city's dining and entertainment precincts, everything is within easy reach.

Coorparoo continues to evolve as a lifestyle destination, highlighted by the vibrant Coorparoo Square precinct-offering cafés, restaurants, boutique retail, and

[For full version visit the website](https://www.positionone.com.au)

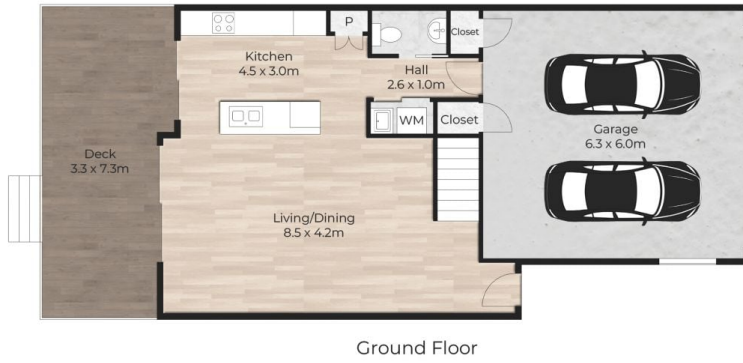
**Type** : Unit  
**Price** : Offers over \$1,275,000  
**Land Size** : 147 sqm  
**View** : <https://www.positionone.com.au/sale/qld/southside/coorparoo/residential/unit/8690146>



**Andrew Sherrington**  
07 3843 4511



**Claudia Smith**  
0450963492



**2/265 Cavendish Road, Coorparoo**

Internal Size: 125sqm | External : 66sqm | Total Size: 191sqm



Andrew Sherrington | 0417 491 897

*This floor plan is for illustrative purposes only. Whilst every attempt has been made to ensure the accuracy of this floor plan, all measurements are approximate only. No responsibility is taken for any errors, omission or miss-statement. Potential purchasers should make their own enquiries as to the accuracy of this floor plan.*