



1-15/18-20 Pockley Street Morningside QLD

4  2  2 

Elegantly designed and constructed to suit a range of lifestyles led by today's modern family, these exclusive brand new residences present an entirely rare offering to Morningside taking form with innovative premium finishes, well-executed layouts and exceptional amenity from within a hushed inner-city enclave.

Meticulously crafted to deliver an artful balance of sophistication and practicality, 20 Pockley Street presents a series of 15 townhomes with a limited selection of 3 and four bedroom plans sure to impress even the most discerning buyers.

Embrace the luxury of choice with light and dark formats on offer, various layouts appealing to each price point, and

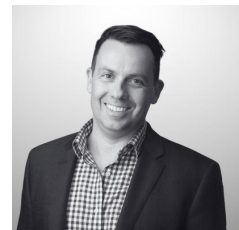
Type : Townhouse

Price : Expression of Interest - Coming in May 2025!

View : <https://www.positionone.com.au/sale/qld/inner-south/morningside/residential/townhouse/8267962>



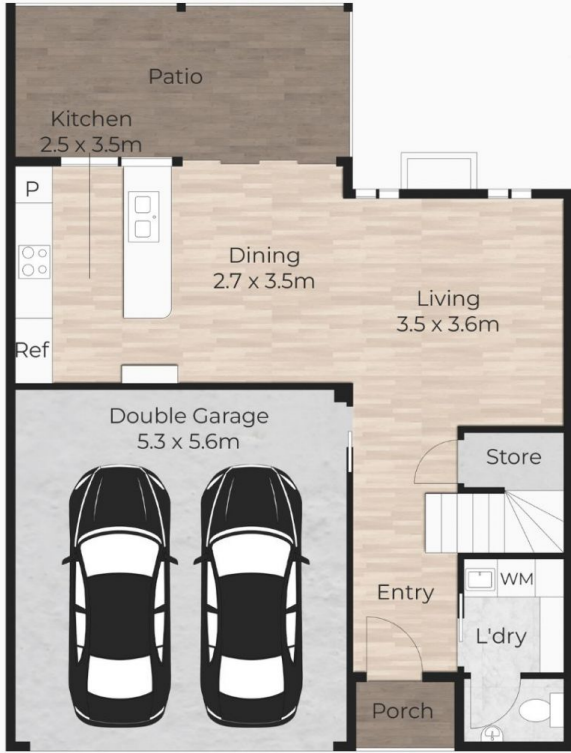
Michelle Davies
0738434511



Sean Parsons
07 3843 4511

[For full version visit the website](https://www.positionone.com.au)

4 bedroom Style 3



Ground Floor



First Floor

Internal Size: 166sqm | External: 16sqm | Total Size: 182sqm

This floor plan is for illustrative purposes only. Whilst every attempt has been made to ensure the accuracy of this floor plan, all measurements are approximate only. No responsibility is taken for any errors, omission or miss-statement. Potential purchasers should make their own enquiries as to the accuracy of this floor plan.



3 bedroom Style 1



Ground Floor



First Floor

Internal Size: 153sqm | External: 22sqm | Total Size: 175sqm

This floor plan is for illustrative purposes only. Whilst every attempt has been made to ensure the accuracy of this floor plan, all measurements are approximate only. No responsibility is taken for any errors, omission or miss-statement. Potential purchasers should make their own enquiries as to the accuracy of this floor plan.