



2/46 Ashton Street Camp Hill QLD

2  1  1 

Ideal for the First Home Owner, Downsizer or Investor! Small complex of 3 units and Pet Friendly. This beautiful unit complex is in close proximity to the Coorparoo Square Cinema & Dining precinct, easy drive to Westfield Carindale and many nearby parks & walk ways.

The tidy design and good use of space of this wonderful unit which includes 2 decent size bedrooms, 1 bathrooms, very generous open plan living area, outdoor alfresco area covered area and single lock up garage?make this a must see property.

Wonderful Features Include:

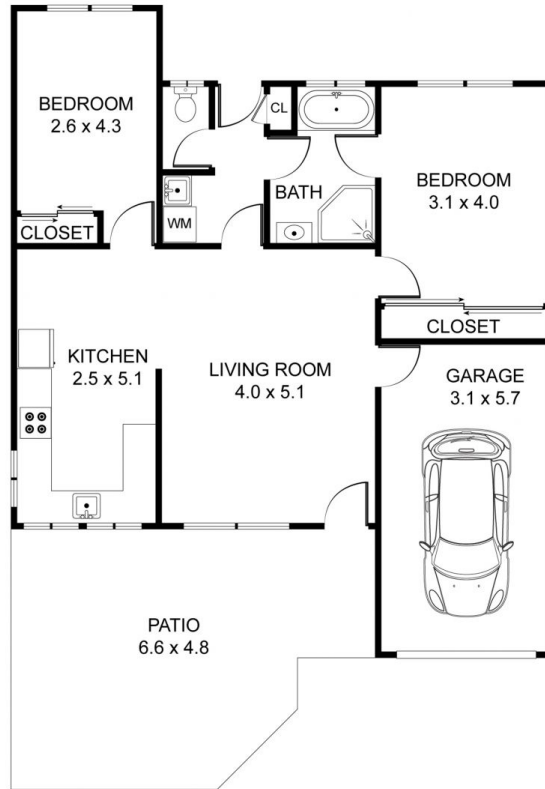
- No stairs.
- 109 sqm of space.

[For full version visit the website](https://www.positionone.com.au/sale/qld/southside/camp-hill/residential/unit/8161015)

Type : Unit
Building Size : 114 sqm
Land Size : 154 sqm
View : <https://www.positionone.com.au/sale/qld/southside/camp-hill/residential/unit/8161015>



Luc Iovenitti
07 3843 4511



**2/46 Ashton St
Camp Hill
QLD 4152**

THIS FLOORPLAN IS PROVIDED WITHOUT WARRANTY OF ANY KIND. THIS FLOORPLAN DISCLAIMS ANY WARRANTY INCLUDING, WITHOUT LIMITATION, SATISFACTORY QUALITY OR ACCURACY OF DIMENSIONS.

Floors: 1
Bedroom 2
Bathrooms: 1

Internal Living Area: 79.00 m²
Patio/Balcony Area: 30.00 m²
Total Area: 109.00 m²