



2/88 Prince Street Annerley QLD

2  2  1 

Located in a quiet tree lined street this spacious ground floor open plan unit is waiting for its new owners. The home offers an open plan design with doors that flow seamlessly out to a relaxing rear large private courtyard. This beautiful unit will satisfy your contemporary needs with a functional kitchen and air-conditioning for your comfort. You will not be disappointed!

This unit offers the astute purchaser further scope to improve on if desired.

Wonderful features include:

- East facing courtyard
- 110 sqm in size
- 2 Bedrooms all with built in robes
- Spacious Main Bedroom (big enough for a King Size bed) with built ins

Price : \$ 563,000
Building Size : 122 sqm
Land Size : 122 sqm
View : <https://www.positionone.com.au/sale/qld/inner-south/annerley/residential/unit/7693577>

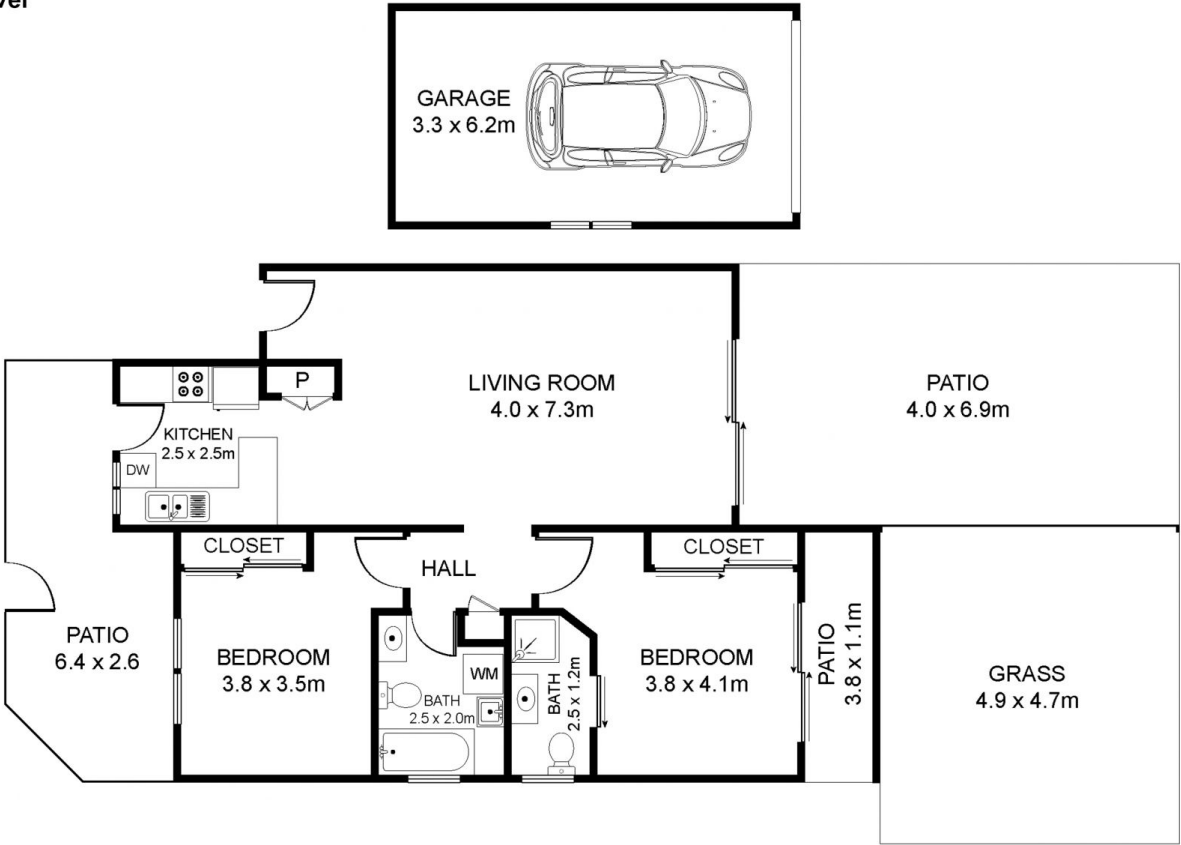


Luc Iovenitti
07 3843 4511



Brad Low
07 3843 4511

Main Level



2/88 Prince St
Annerley
QLD 4103

THIS FLOORPLAN IS PROVIDED WITHOUT WARRANTY OF ANY KIND. THIS FLOORPLAN DISCLAIMS ANY WARRANTY INCLUDING, WITHOUT LIMITATION, SATISFACTORY QUALITY OR ACCURACY OF DIMENSIONS.

Floors: 1
Bedroom 2
Bathrooms: 2

Total Area: 71.00 m²
Balcony/Patio Area: 40.00 m²
Total Area: 111.00 m²