



18 Moatah Drive Beachmere QLD

3 2 3

Beachmere beauty situated on a 651m2 block with easy access via semi-circular driveway.

Internal Features:

Once entering from the private entrance this home offers a family friendly practical layout, features a light and spacious L-shaped lounge/dining area with split system air-conditioner to help with those bay breezes in summer.

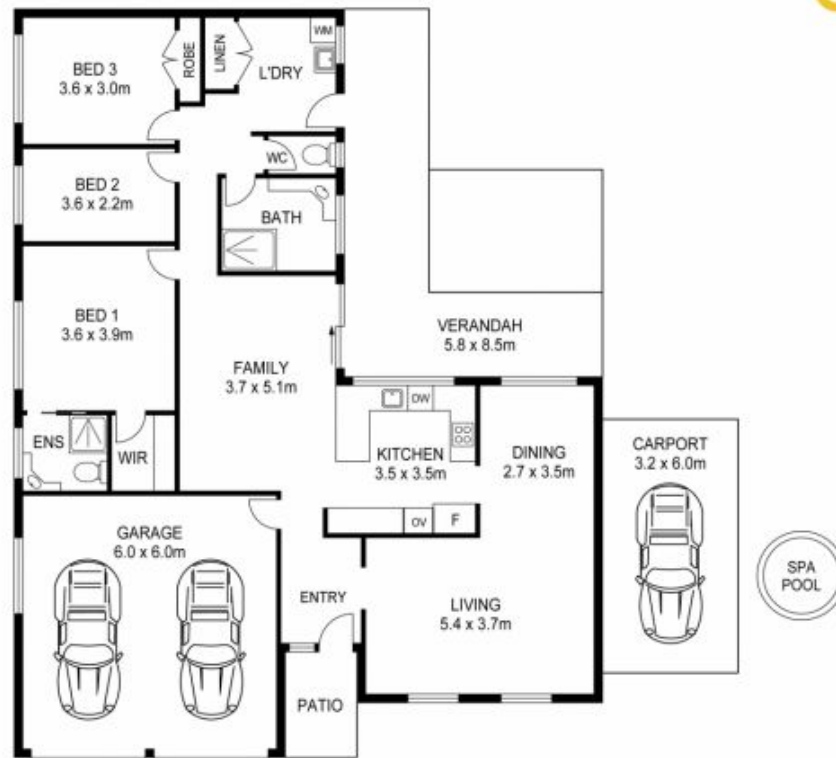
Stylish neutral kitchen designed for easy flow with plenty of cupboards and draws plus integrated dishwasher, modern appliances gas hob and large fridge/freezer space, stone preparation tops with cascade designed bench area.

Good sized family room with split system air-conditioner and subtle lighting, the family room flowing out to the

Price : \$ 605,000
Building Size : 152 sqm
Land Size : 651 sqm
View : <https://www.positionone.com.au/sale/qld/redcliffe-bribie-caboolture/beachmere/residential/house/7584988>



Carol Fardell
07 3843 4511



APPROX FLOOR AREA : 242m²



For illustrative purposes only. Not an engineering plan.
Whilst all effort is taken to be correct, this plan may contain inaccuracies or omissions and should be used only as a guide.
No representations are made as to the condition, operability or legal status of anything depicted.