






30 Clermont Street Holmview QLD

4  2  2 

Elevated breezy location set on 397 sqm, this home is the ideal first home buyer or investor opportunity. Located in the idyllic Vale Estate with beautiful parklands. boasts 4 bedrooms, 2 bathrooms, open plan kitchen, living and dining, covered outdoor entertaining area and double garage.

View : <https://www.positionone.com.au/sale/qld/logan/holmview/residential/house/7251017>

Move in before Christmas!

Many features include:

- 'as new' family sized low-set low maintenance brick and tile home awaits you.
- The master bedroom is at the rear of the home and includes ceiling fan, split air conditioner, ensuite and walk in robe.
- Three other bedrooms are spacious with built in robes and ceiling fans.

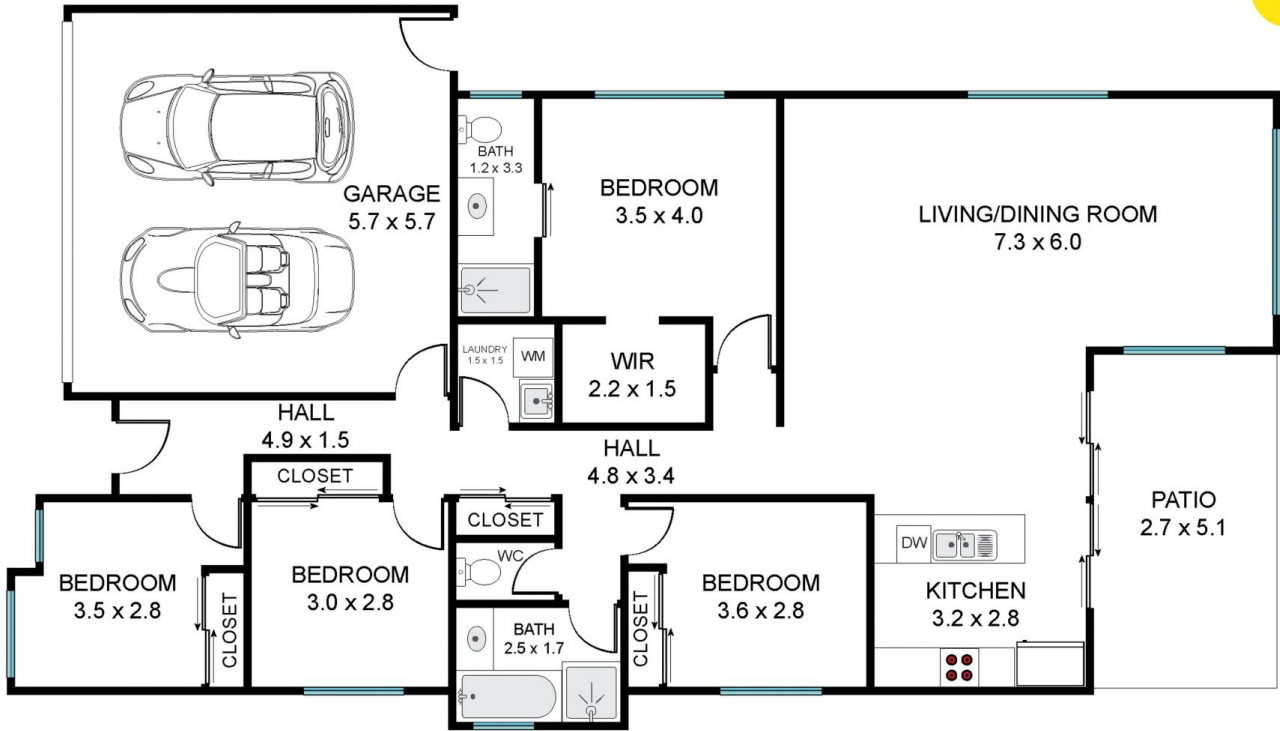


Luc Iovenitti
07 3843 4511



Brad Low
07 3843 4511

Main Level



30 Clermont St
Holmview
QLD 4207

THIS FLOORPLAN IS PROVIDED WITHOUT WARRANTY OF ANY KIND. THIS FLOORPLAN DISCLAIMS ANY WARRANTY INCLUDING, WITHOUT LIMITATION, SATISFACTORY QUALITY OR ACCURACY OF DIMENSIONS.

Floors: 1
Bedroom: 4
Bathrooms: 2

Total Area Combined : 162.00 m²
Balcony / Patio: 14.00 m²
Total Area: 176.00 m²